

# Secure CopyMaker

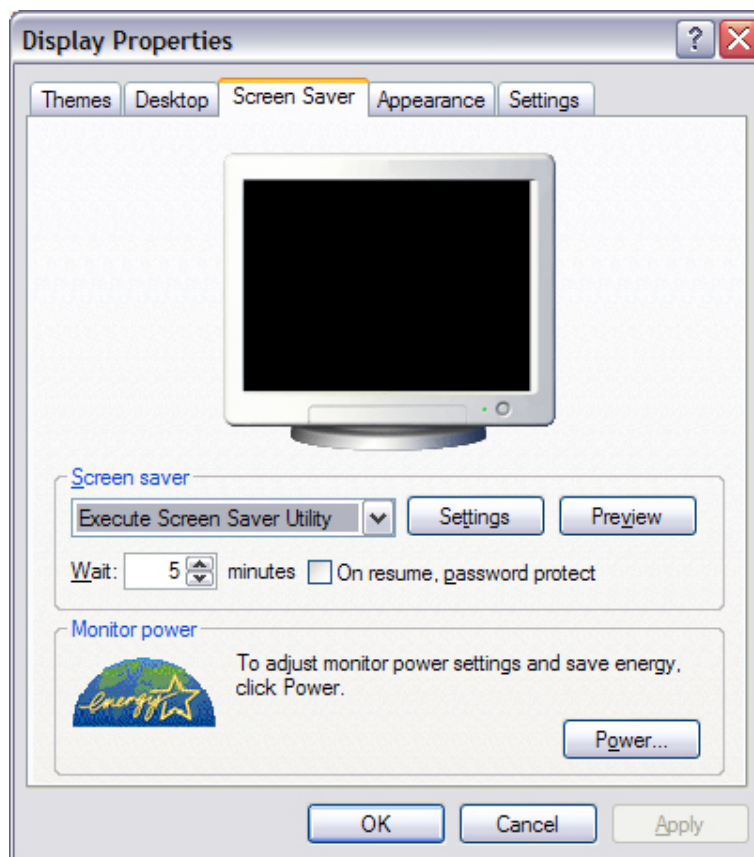
The CopyMaker software is the best way to track walkup copy data on Kip SCSI scanners. You can setup CopyMaker to require a Username and Password before allowing you to make a copy. This will help keep accurate track of who is making copies. However, if the user walks away from the PC without turning off CopyMaker anyone can make copies with their account.

This is a method you can use to have CopyMaker shutdown and reload when your ScreenSaver turns on.

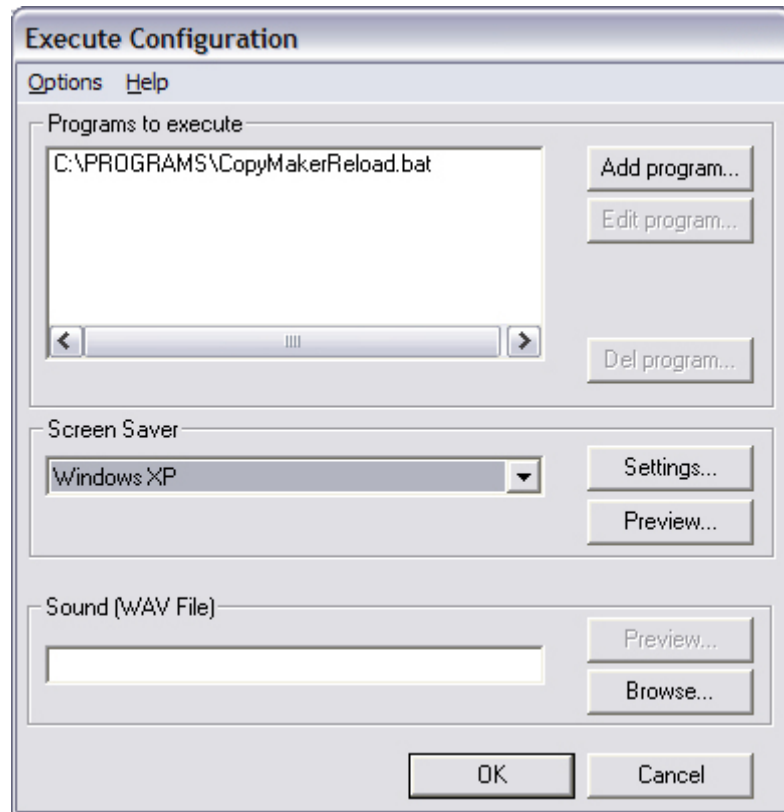
Download the CopyMaker-Reload.zip from [www.ebsprinters.com](http://www.ebsprinters.com)

Extract the EXEscreensaver folder and CopyMaker-Reload.exe to your local drive.

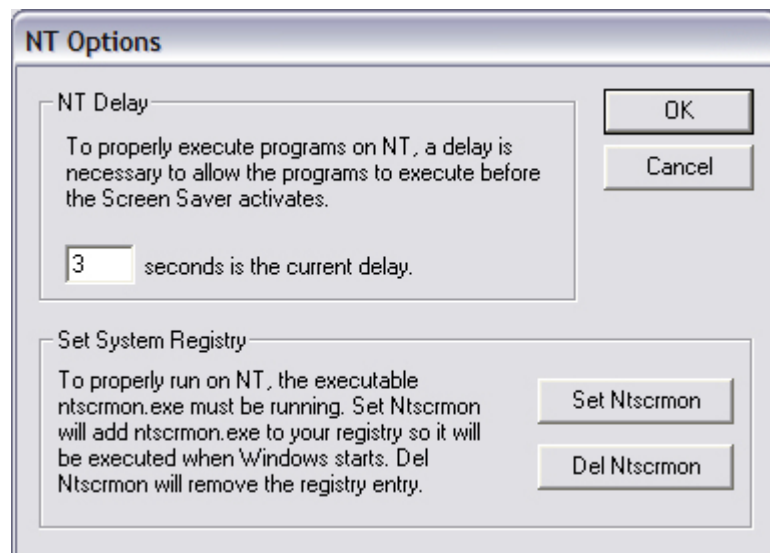
1. Install the Execute Screen Saver Utility (<http://posum.com>) FREEWARE - Run Setup.exe from the extracted EXEscreensaver folder.
2. Install the CopyMaker-Reload.exe
3. Open your system Display Properties page and select "Execute Screen Saver Utility" from the screensaver list. Set "Wait" time to 5min.



4. Click the Settings button. Click Add Program and select the “C:\PROGRAMS\CopyMakerReload.bat” Select a screensaver from the list. Any screensaver will work.



5. Select the Option menu in the Execute Configuration screen. Click “NT Options” Set the delay time to 3 sec. Click the “Set Ntscrmon” button.



Now when a user walks away from your Scan To File PC without closing CopyMaker you don't need to worry. After 5min of no activity the Windows Screensaver will kick in and the CopyMakerReload batch file will run. Closing CopyMaker and Re-Opening it. This will ensure that all Username and Passwords are reset.